

41 Corsham Street // Old Street // London

---

# THE CORSHAM

---

22,000 – 48,585 Sq Ft // Unique Office Space

# POWER TO THE PEOPLE.

The Building



22,000 – 48,585 sq ft  
of outstanding, flexible  
workspace over ground  
and first floors – in an  
environment to inspire  
and get the most out  
of your team.

# PEOPLE FOCUSED.

The Corsham has been designed with today's businesses in mind.

Mindful that bringing people back to the office and retaining talent is key, the building offers two of the largest available floor plates in Old Street.

The light and open environment promotes wellbeing and productivity – along with the ability to create best-in-class end of journey facilities.



HIGH PROFILE,  
TRIPLE HEIGHT  
GLAZED PROMINENT  
STREET ENTRANCES



48,585 SQ FT  
OF UNIQUE,  
SELF-CONTAINED  
OFFICE SPACE



EXTERIOR FAÇADE 







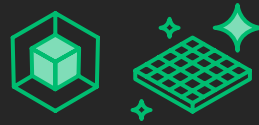


GROUND FLOOR CGI 

# SELF-CONTAINED. OPEN PLAN.

The floor plates are offered in shell and floor condition – with a landlord's contribution towards a Cat A fitout.

Featuring an architecturally designed interconnecting feature staircase – the space provides the perfect blank canvas to create a work space that works for your business.



**SHELL AND FLOOR**



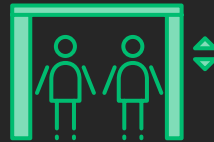
**LANDLORD'S  
CONTRIBUTION TOWARDS  
CATEGORY A FIT OUT**



**PROMINENT SELF-  
CONTAINED STREET  
ENTRANCE**



**UNIQUE GROUND  
FLOOR BRANDING  
OPPORTUNITY**



**1X 8  
PERSON LIFT**



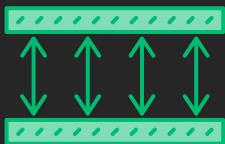
**ARCHITECTURALLY DESIGNED  
HELIX SPIRAL STAIRCASE TO  
1ST FLOOR**



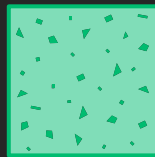
**FLOOR-TO-CEILING  
WINDOWS**



**ABILITY TO CREATE END  
OF JOURNEY FACILITIES**



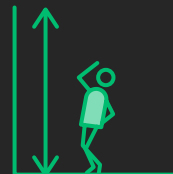
**SLAB TO SLAB CEILING  
HEIGHT OF 3,300 MM**



**EXPOSED CONCRETE &  
INDUSTRIAL STYLE FINISHES**



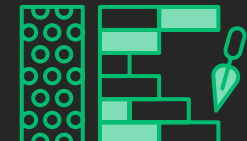
**NEW FULLY ACCESSIBLE  
RAISED FLOOR**



**2X 6M HEIGHT CENTRAL  
ATRIUM SPACES**



**SET TO ACHIEVE BREEAM  
EXCELLENT RATING**



**BRICK & PUNCHED  
ALUMINIUM FAÇADE**



# FOR THE PEOPLE.

The Location



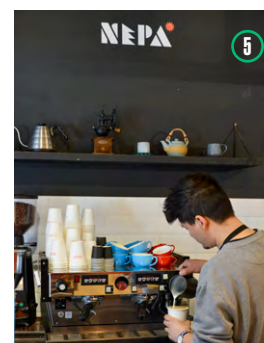
Old Street, Hoxton and Shoreditch offer London's most celebrated social, cultural and retail offering.



# TAKE YOUR PICK.

Whether morning, noon or night – the area offers something for everyone.

The Bower next to Old Street roundabout features an eclectic mix of bars, restaurants and cafés. Whilst, nearby Hoxton Square also has a good mix of social spaces and provides an open space at the heart of the square – perfect to relax and unwind.



- ① PACHAMAMA EAST
- ② OZONE COFFEE
- ③ SARATA HALL
- ④ HONEST BURGER
- ⑤ NEPA





- ① GLORIA
- ② COCOTTE
- ③ HOXTON SQUARE
- ④ MEAT LIQUOR
- ⑤ SHOREDITCH GRIND
- ⑥ FRANZE & EVANS

# PEOPLE MOVERS.

It's easy to get around town, with Old Street station just a minute's walk from the building.

The transformation of Old Street roundabout will make it a more pedestrian and cycle friendly area, with a new public space in a peninsula around the station – as well as a new station entrance expected by spring 2023.



With the arrival of the Elizabeth line on May 24th at Liverpool Street station, this will further reduce travel times across London and beyond.



REDEVELOPMENT OF OLD STREET STATION 

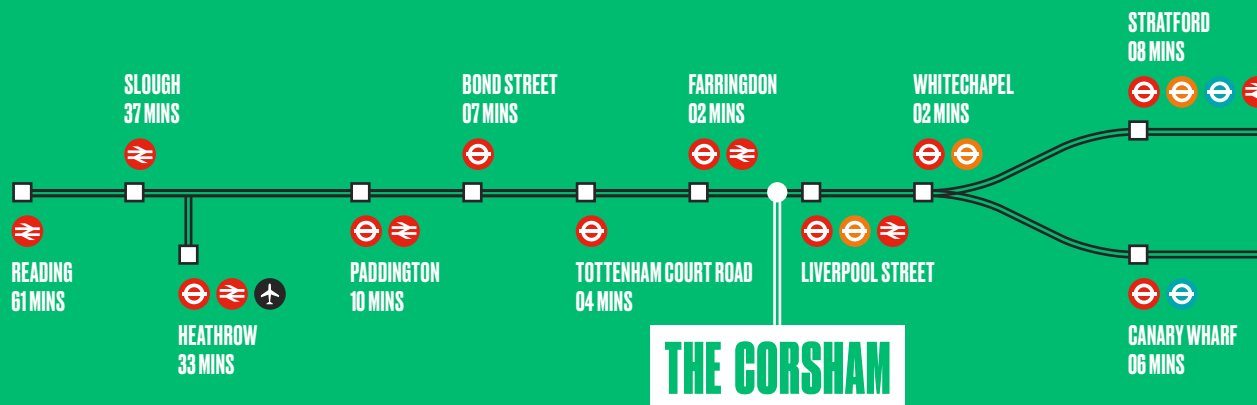
## JOURNEY TIMES

From the building.

	OLD STREET	SHOREDITCH HIGH STREET	MOORGATE	BARBICAN	LIVERPOOL STREET	FARRINGTON
	01	08	11	14	15	18
	<01	04	05	06	06	07

## ELIZABETH LINE

From Liverpool Street station.



Travel times sources [tfl.gov.uk](https://www.tfl.gov.uk) and [crossrail.co.uk](https://www.crossrail.co.uk)



# SPOILT FOR CHOICE.

## RESTAURANTS

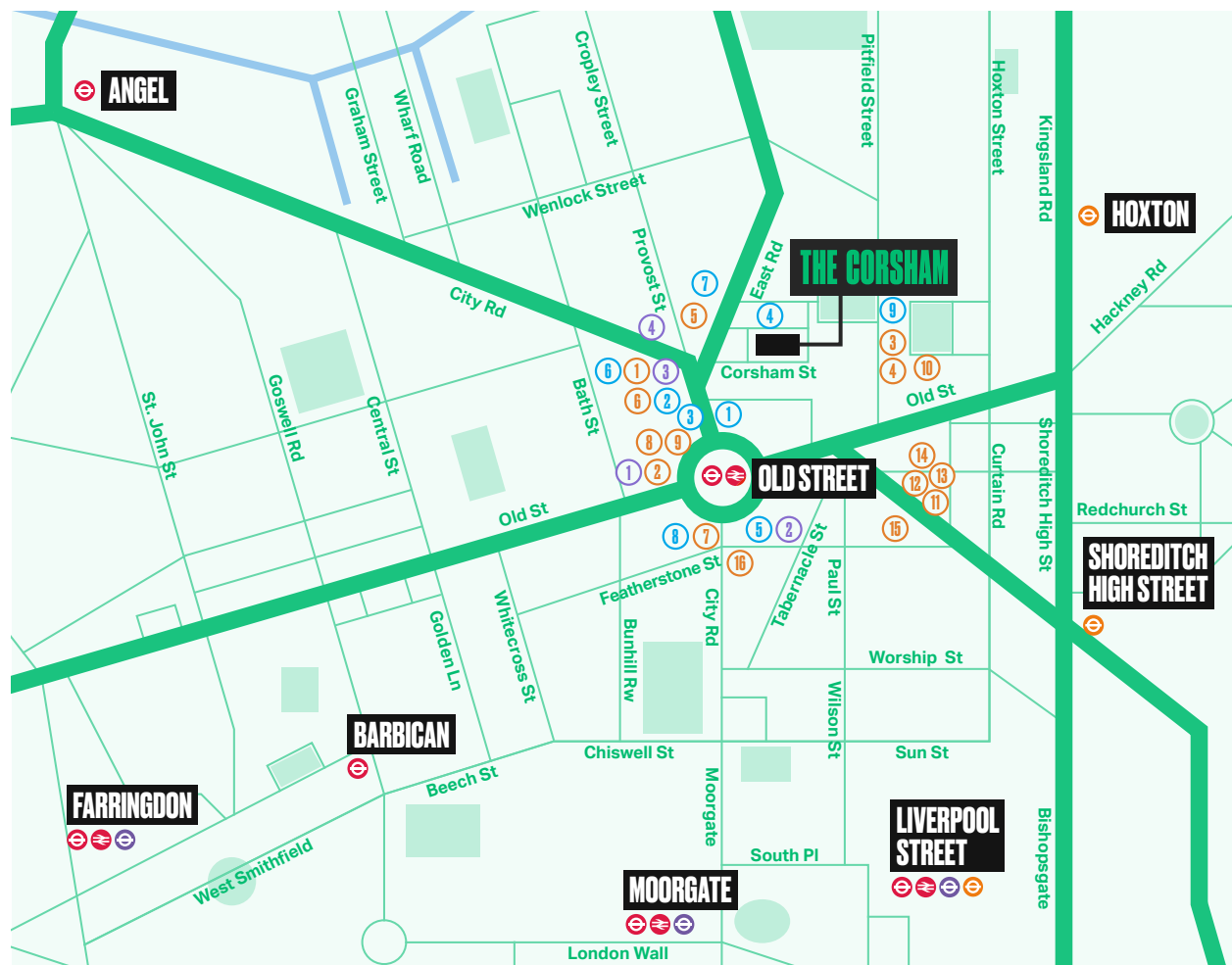
- 1 BONE DADDIES
- 2 SERATA HALL
- 3 COCOTTE
- 4 MEATLIQUOR
- 5 PIZZA UNION
- 6 CRUDO CEVICHIERIA
- 7 DAFFODIL MULLIGAN
- 8 WAGAMAMA
- 9 HOXTON GRILL
- 10 THE BREAKFAST CLUB
- 11 GLORIA
- 12 BLACKLOCK
- 13 BUTCHIES
- 14 POPOLO
- 15 PACHAMAMA EAST
- 16 LANTANA

## BARS & CAFES

- 1 NIGHTJAR
- 2 BREWDOG
- 3 SHOREDITCH GRIND
- 4 NEPA
- 5 OZONE COFFEE
- 6 OLD FOUNTAIN
- 7 THE ALCHEMIST
- 8 GIBNEY'S LONDON
- 9 GIGI'S HOXTON

## LEISURE

- 1 GYMBOX
- 2 XOYO
- 3 THE Z HOTEL
- 4 MONTCALM EAST HOTEL



The Space 

# HEAD COUNT.

Large and flexible floor plates with split options mean – you can make the space work – the way you work.

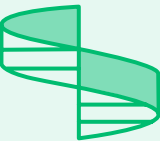
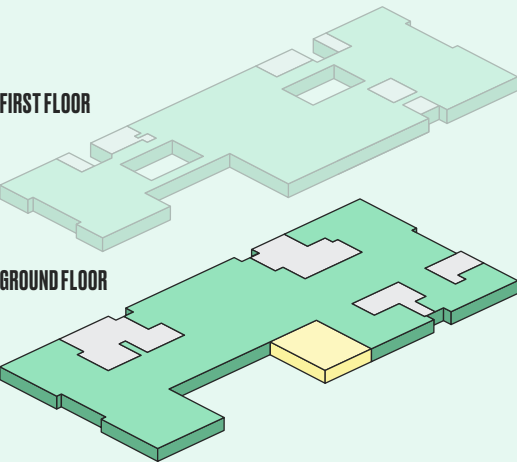




# GROUND FLOOR PLAN

26,652 SQ FT / 2,476.1 SQ M

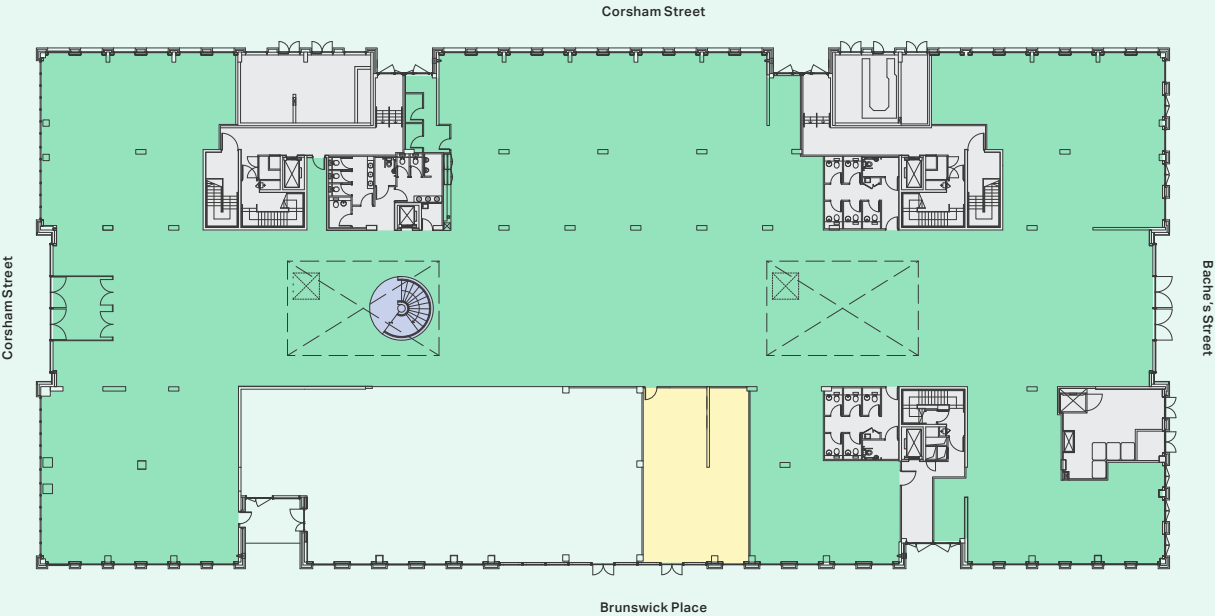
BIKES & SHOWERS: 1,227 SQ FT / 114 SQ M



GROUND AND FIRST FLOORS JOINED VIA INTERCONNECTING SPIRAL STAIRCASE

- Lettable Space
- Interconnecting Staircase
- Bikes & Showers

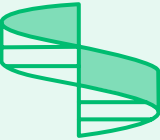
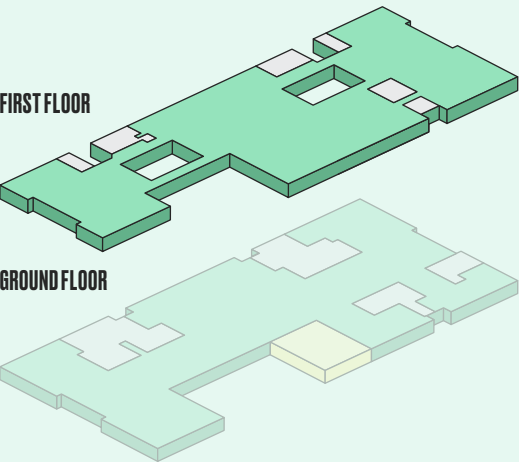
Plans indicative only. Not to scale.





# FIRST FLOOR PLAN

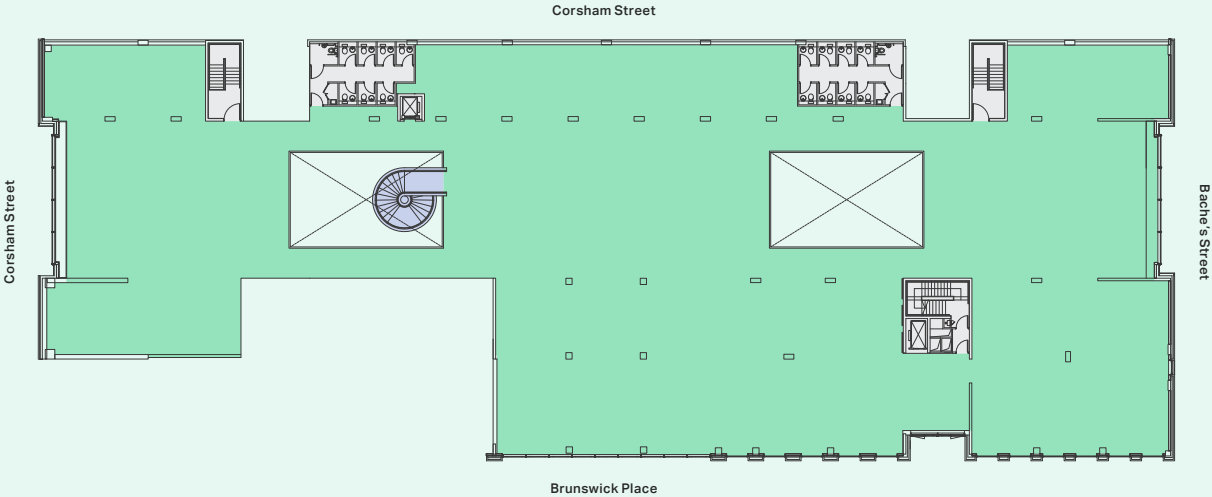
21,933 SQ FT / 2,037.6 SQ M



GROUND AND FIRST FLOORS JOINED VIA  
INTERCONNECTING SPIRAL STAIRCASE

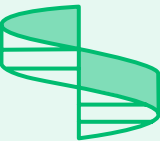
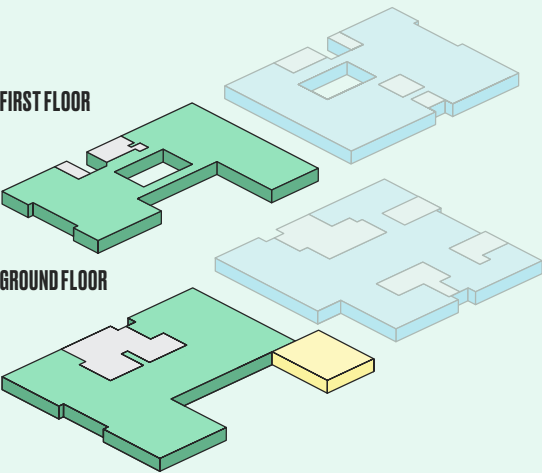
- Lettable Space
- Interconnecting Staircase

Plans indicative only. Not to scale.



# WEST SPLIT FLOOR PLANS

22,000 SQ FT / 2,044 SQ M

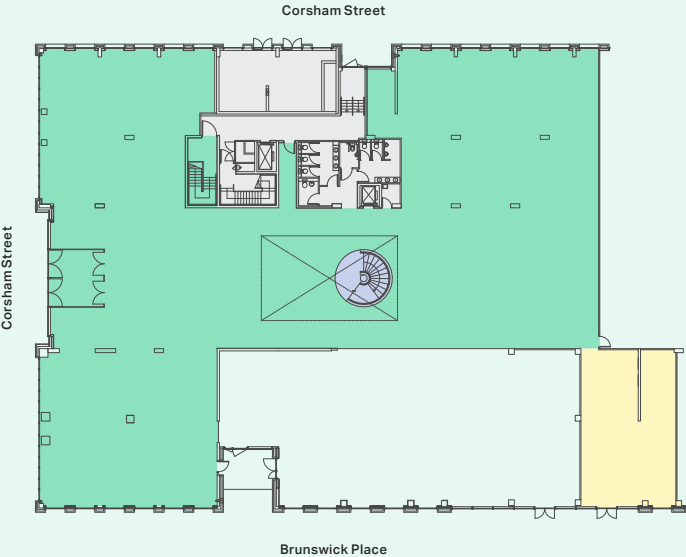


GROUND AND FIRST FLOORS JOINED VIA  
INTERCONNECTING SPIRAL STAIRCASE

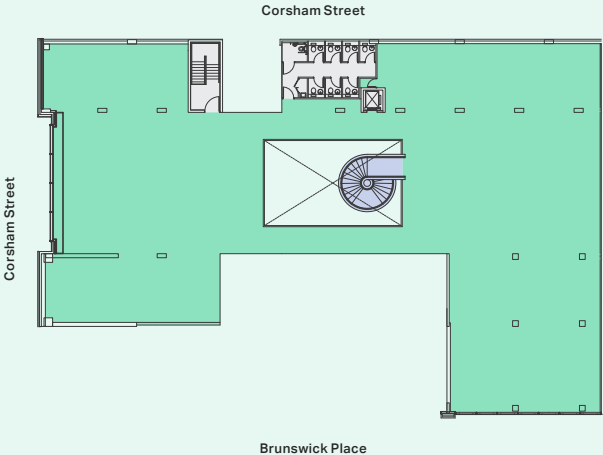
- Lettable Space
- Interconnecting Staircase
- Bikes & Showers

Plans indicative only. Not to scale.

GROUND  
12,420 SQ FT / 1,154 SQ M



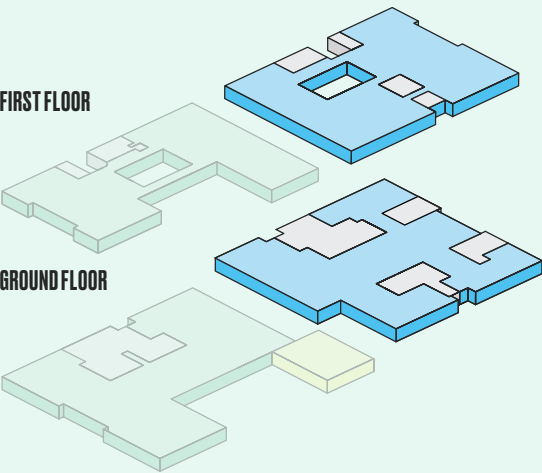
FIRST  
9,580 SQ FT / 890 SQ M





# EAST SPLIT FLOOR PLANS

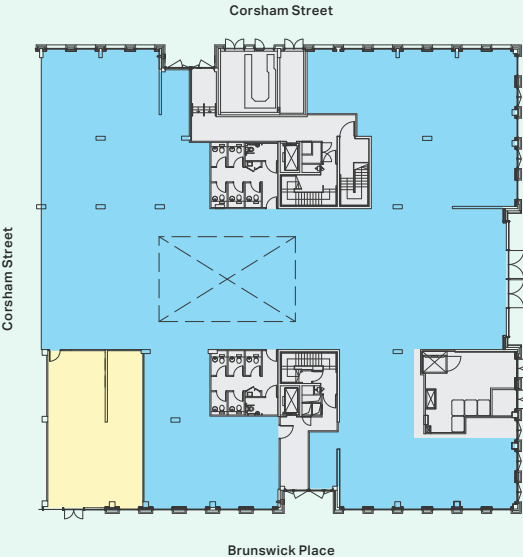
25,263 SQ FT / 2,347 SQ M



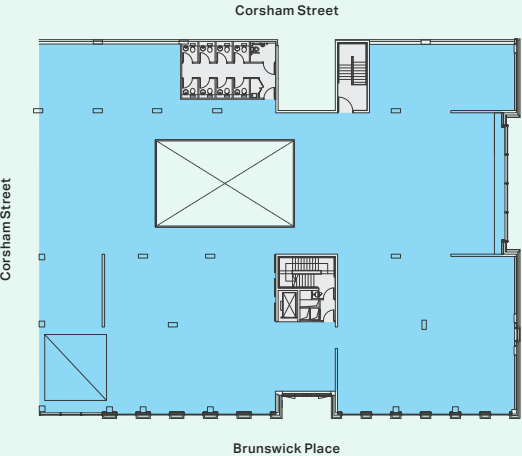
- Lettable Space
- Interconnecting Staircase
- Bikes & Showers

Plans indicative only. Not to scale.

**GROUND**  
13,982 SQ FT / 1,299 SQ M



**FIRST**  
11,281 SQ FT / 1,048 SQ M



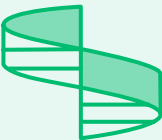
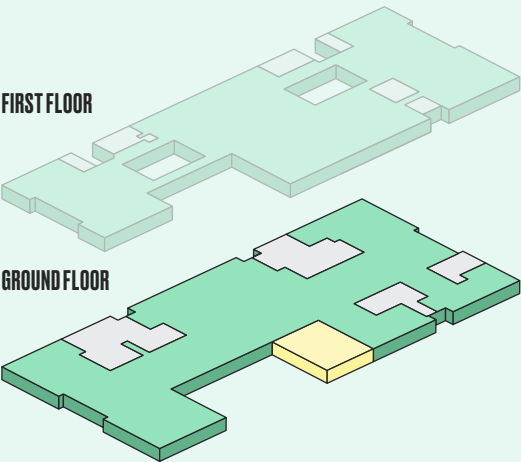




# GROUND FLOOR SPACE PLAN

LOW DENSITY FIT OUT  
26,652 SQ FT / 2,476.1 SQ M

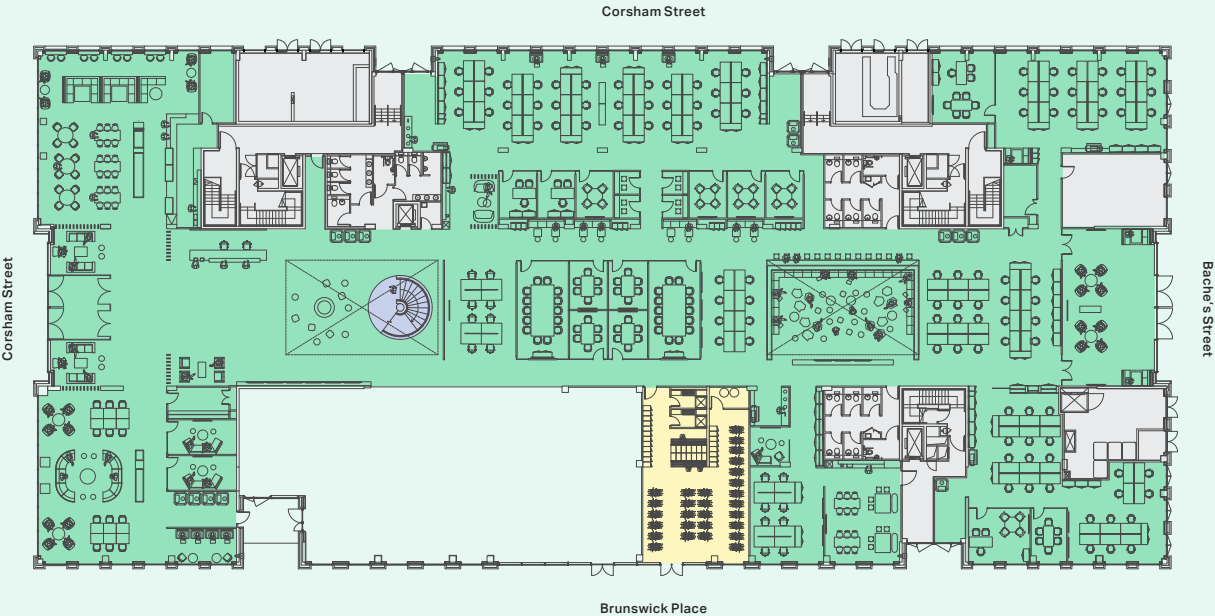
BIKES & SHOWERS 1,227 SQ FT / 114 SQ M



GROUND AND FIRST FLOORS JOINED VIA  
INTERCONNECTING SPIRAL STAIRCASE

- Lettable Space
- Interconnecting Staircase
- Bikes & Showers

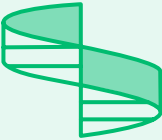
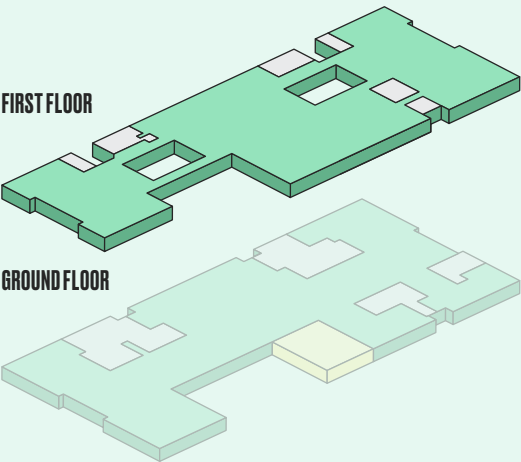
Plans indicative only. Not to scale.



Open Plan Desks	104	V/C Pods	4
Open Plan Hot Desks	16	Telephone Pods	13
1 Person Offices	4	Café Area	1
Various Size Meeting Rooms	11	Refreshment & Breakout	1
Large Co-working Lounge	1	Refreshment Point	1
V/C Rooms	2	Reception	1
Townhall/ Presentation Area	1	Waiting Areas	3
Informal Touchdown Areas	6	<b>Total Occupancy</b>	<b>124</b>
Huddle Area	1	<b>Alternative Working Positions</b>	<b>30+</b>
4 Person Booth	1		

# FIRST FLOOR SPACE PLAN

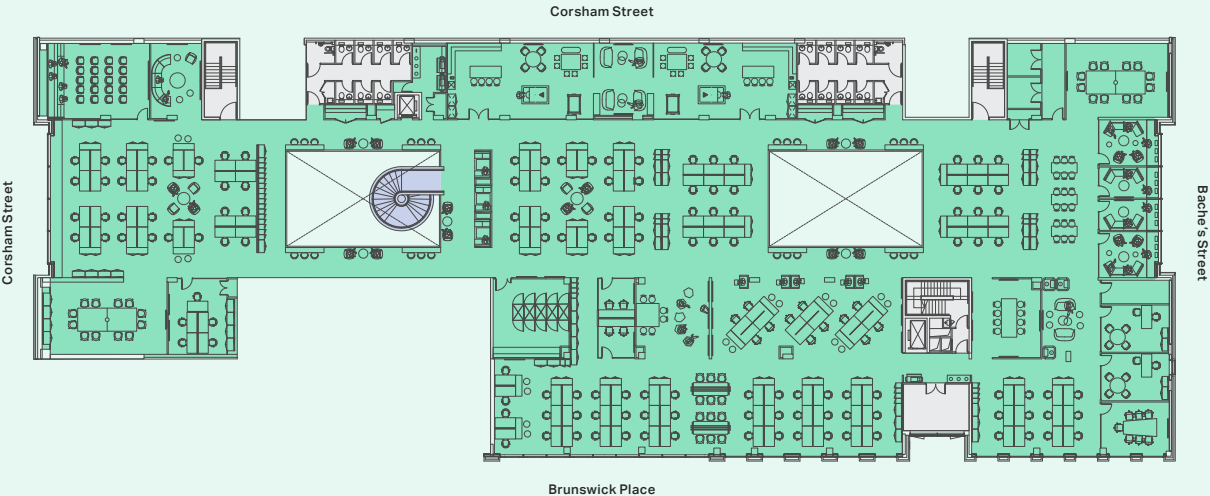
LOW DENSITY FIT OUT  
21,933 SQ FT / 2,037.6 SQ M



GROUND AND FIRST FLOORS JOINED VIA  
INTERCONNECTING SPIRAL STAIRCASE

- Lettable Space
- Interconnecting Staircase

Plans indicative only. Not to scale.



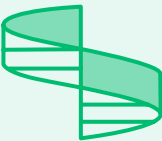
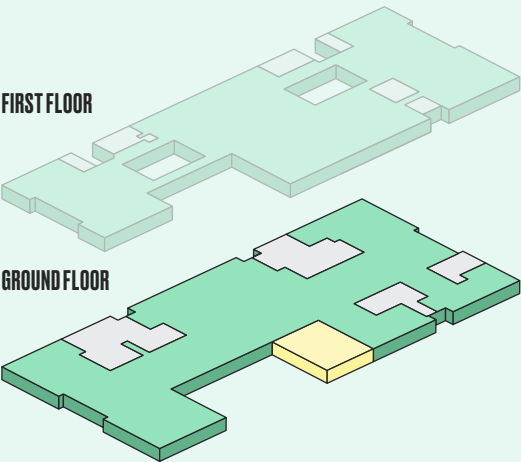
Open Plan Desks	124	Informal Touchdown Areas	7
Open Plan Hot Desks	12	Team Work Areas	3
5 Person Office	1	4 Person Booths	3
1 Person Offices	2	Telephone Pods	3
V/C Rooms	5	Refreshment & Breakout	1
Lounge Rooms	2	<b>Total Occupancy</b>	<b>143</b>
Presentation Room	1	<b>Alternative Working Positions</b>	<b>70+</b>
Collaboration Working Areas	4		



# GROUND FLOOR SPACE PLAN

HIGH DENSITY FIT OUT  
26,652 SQ FT / 2,476.1 SQ M

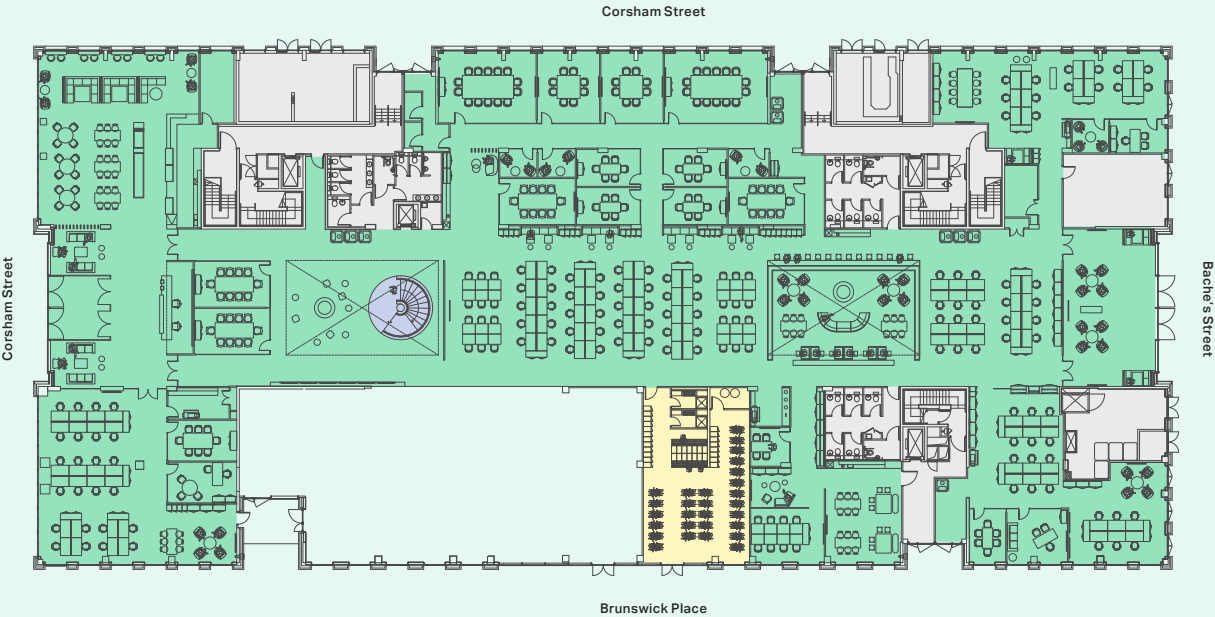
BIKES & SHOWERS 1,227 SQ FT / 114 SQ M



GROUND AND FIRST FLOORS JOINED VIA  
INTERCONNECTING SPIRAL STAIRCASE

- Lettable Space
- Interconnecting Staircase
- Bikes & Showers

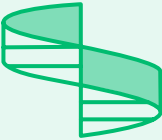
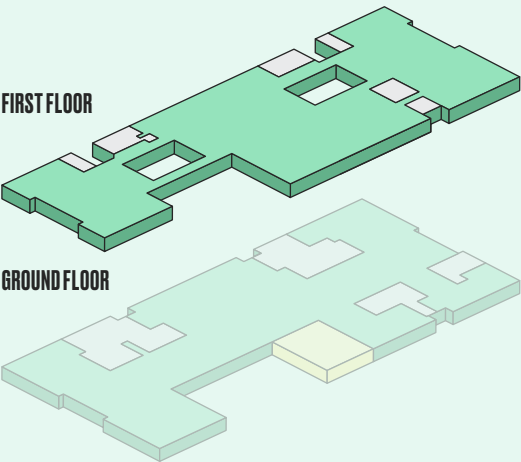
Plans indicative only. Not to scale.



Open Plan Desks	116	4 Person Booths	3
Open Plan Hot Desks	32	Telephone Pods	9
1 Person Offices	3	Café Area	1
Various Size Meeting Rooms	18	Refreshment & Breakout	1
Large Co-working Lounge	1	Refreshment Points	2
Collaboration Working Areas	2	Reception	1
Team Work Area	1	Waiting Areas	2
Informal Touchdown Areas	6	<b>Total Occupancy</b>	<b>152</b>
Huddle Area	1	<b>Alternative Working Positions</b>	<b>40+</b>

# FIRST FLOOR SPACE PLAN

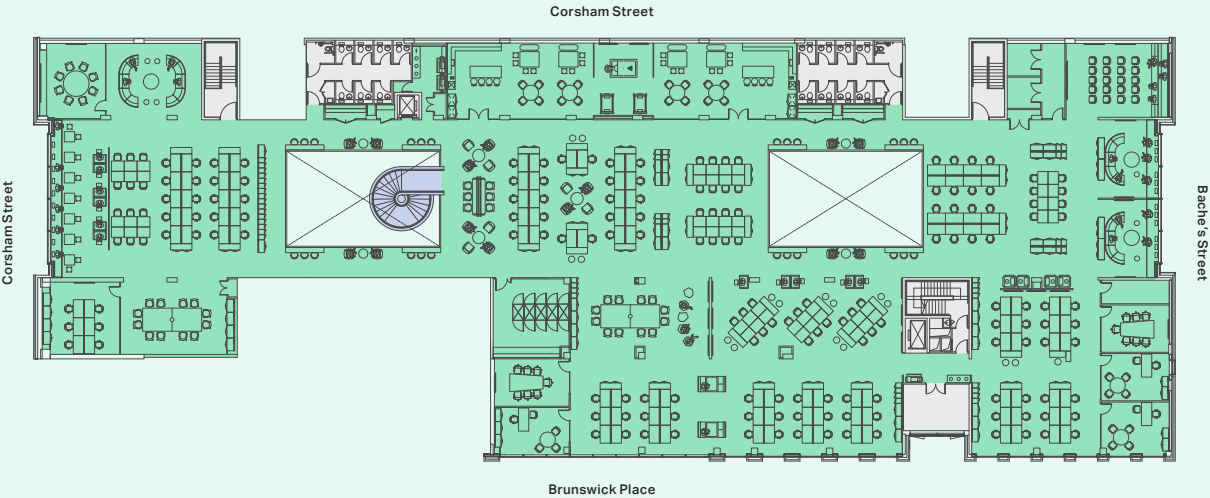
HIGH DENSITY FIT OUT  
21,933 SQ FT / 2,037.6 SQ M



GROUND AND FIRST FLOORS JOINED VIA  
INTERCONNECTING SPIRAL STAIRCASE

- Lettable Space
- Interconnecting Staircase

Plans indicative only. Not to scale.

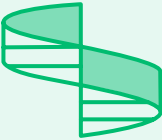
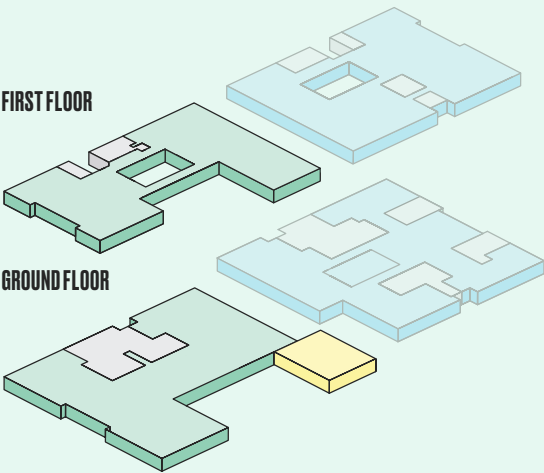


Open Plan Desks	114	Informal Touchdown Areas	5
Open Plan Hot Desks	54	22 Person Quiet Area	1
6 Person Offices	1	4 Person Booths	2
1 Person Offices	3	Telephone Pods	4
30 Person Conference Room	1	Refreshment & Breakout	1
8 Person Meeting Room	1	<b>Total Occupancy</b>	<b>177</b>
V/C Rooms	2	<b>Alternative Working Positions</b>	<b>70+</b>
Collaboration Working Areas	6		



# INDICATIVE SPLIT SPACE PLANS

22,000 SQ FT / 2,044 SQ M

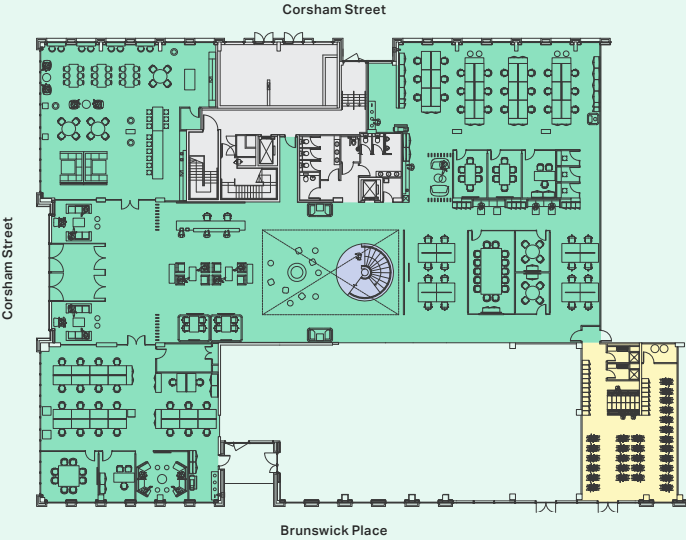


GROUND AND FIRST FLOORS JOINED VIA  
INTERCONNECTING SPIRAL STAIRCASE

- Lettable Space
- Interconnecting Staircase
- Bikes & Showers

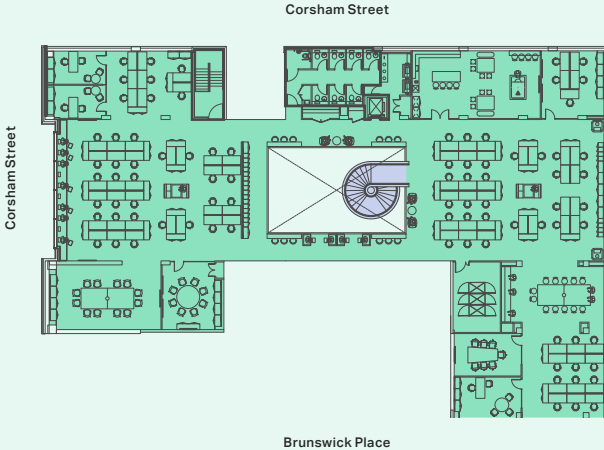
Plans indicative only. Not to scale.

## GROUND 12,420 SQ FT / 1,154 SQ M



Open Plan Desks	48	V/C Pods	3
Open Plan Hot Desks	16	Telephone Pod	1
1 Person Offices	2	Refreshment & Breakout	1
Various Size Meeting Rooms	6	Reception	1
Team Work Area	1	Waiting Area	1
Informal Touchdown Areas	3	<b>Total Occupancy</b>	<b>156</b>
Meeting Pods	4	<b>Alternative Working Positions</b>	<b>50+</b>

## FIRST 9,580 SQ FT / 890 SQ M



Open Plan Desks	80	Telephone Pods	2
1 Person Offices	3	Refreshment & Breakout	1
5 Person Meeting Room	1	<b>Total Occupancy</b>	<b>156</b>
V/C Room	1	<b>Alternative Working Positions</b>	<b>50+</b>
Collaboration Working Areas	2		
Informal Touchdown Areas	2		
4 Person Booths	2		

# FIND OUT MORE NOW.

## TERMS

Upon application.



### STEPHEN PAGE

07789 888 973

[spage@antonpage.com](mailto:spage@antonpage.com)

### ANDY INGRAM

07901 000 763

[aingram@antonpage.com](mailto:aingram@antonpage.com)

## VIEWINGS

Strictly through joint sole letting agents.



### TRACY COLLINS

07831 420 528

[tracy.collins@montagu-evans.co.uk](mailto:tracy.collins@montagu-evans.co.uk)

### LUCIE SERGEANT

07920 417 991

[lucie.sergeant@montagu-evans.co.uk](mailto:lucie.sergeant@montagu-evans.co.uk)

# THECORSHAM.CO.UK

MISREPRESENTATION ACT 1967 AND PROPERTY MISDESCRIPTION ACT 1991 1. Particulars These particulars are not an offer on contract, nor part of one. You should not rely on statements made by Anton Page and Montagu Evan's in these particulars or by word of mouth or in writing ("information") as being factually accurate about the property, its condition or its value. Anton Page and Montagu Evan's hasn't any authority to make any representations about the property, and accordingly any information given is entirely without responsibility on the part of the agents, seller(s) or lessor(s). 2. Photos etc The photographs show only certain parts of the property as they appeared at the time they were taken. Areas, measurements and distances given are approximate only. 3. Regulations etc Any reference to alterations to, or use of, any part of the property does not mean that any necessary planning, building regulations or other consent has been obtained. A buyer or lessee must find about by inspection or in other ways that these matters have been properly dealt with and that all information is correct. 4. VAT The VAT position of the building may change without notice. The Code of Leasing Premises in England & Wales recommends you seek professional advice before agreeing a business tenancy. November 2022

Designed and produced by Cre8te - 020 3468 5760 - [cre8te.london](http://cre8te.london)